



**Symmetrical**  
group



# CAPABILITY STATEMENT

Presented by:  
Luke Aldridge  
Symmetrical Group

# RELEVANT EXPERIENCE - CIVIL

SYMMETRICAL GROUP COMMENCED TRADING IN 2008 AS A MULTI DISCIPLINED CONSTRUCTION AND MAINTENANCE CONTRACTOR BASED IN THE PILBARA....WE ARE PREPARED TO GO ANYWHERE AND DO ANYTHING TO GET IT DONE FOR OUR CLIENTS.

- ☐ Surveys and Setouts
  - ☐ GPS and Control Point Derived Setouts
- ☐ Detailed Excavation
- ☐ Bulk Earthworks
- ☐ Condition and Compaction of Fill to meet compaction target
- ☐ Batching Engineered Concrete Mixtures
- ☐ Road Base Preparation and Resurfacing
- ☐ Insitu and Precast Concrete
- ☐ Earth Stake Installation
- ☐ Bulk Screening Operation
- ☐ Quarantine Cleaning to Varanus Island Requirements
- ☐ HDPE Bund Liners
- ☐ Remote Concrete Batching and Delivery
- ☐ Building Maintenance/Refurb and Temporary Arrangments
- ☐ Rock Anchor Installation
- ☐ Detailed Civil and Structural Design
- ☐ New Land Estate Sub Division Services
  - ☐ Drainage Installation
  - ☐ Service Trenching and Cable Installation
- ☐ Water bore drilling and Pump Installation (upto 40m deep)
- ☐ Commercial and Domestic Building Construction
- ☐ Dam Construction
- ☐ Town Centre Redevelopments (Tom Price)
- ☐ Underground service location & identification
- ☐ Vacuum Excavation



# HOW DO YOU MAKE YOUR SERVICE SAFER?

WE'VE FOUND THE BEST WAY TO ANSWER THIS QUESTION IS BY TALKING TO COLLEAGUE'S (AT ALL LEVELS) IN SIMILAR PROFESSIONS AND INDUSTRIES ABOUT WAYS THAT THEY ARE MAKING SAFETY AND COMPLIANCE EASIER RESULTING IN AN IMPROVEMENT IN SAFETY PERFORMANCE.

WE HAVE DISCUSSED DIFFERENT METHODS AND SYSTEMS IMPLEMENTED BY OTHER MINING AND RESOURCE COMPANIES, CONTRACTORS, EPCM'S AND MANUFACTURERS, AND HAVE FOUND THAT COMPANIES INVOLVED IN LARGE SCALE MINING AND RESOURCES ARE USING SIMILAR SYSTEMS WHICH ARE VERY EFFECTIVE.

WE HAVE IDENTIFIED SOME KEY AREA'S IN SAFETY MANAGEMENT THAT WE INTRODUCED TO COMPLIMENT OUR CLIENT'S MANDATORY PROCESSES.

## **1 Onboarding**

- To ensure we get the right candidate. In addition we also recognise that high percentage of injuries occur to people that are in the first 3 months of their employment.

## **2 Mentoring**

- To Ensure our staff stay focused on safety. In addition we also recognise that high percentage of injuries occur to people that are in the first 3 months of their employment.

## **3 Qualification and Training Confirmation and Refresher reminders**

- To avoid having staff on site with expired or irrelevant qualifications.

## **4 Safety Awareness Training**

- To increase awareness on a range of matters

## **5 Online SYMSYS Login**

- To ensure everyone has access to the latest versions of our policies and procedures.

## **6 Employee Assistance Program**

- our employees are our organisation's greatest resource, and we committed to improving organisational wellbeing.

## **7 Reliability with Predictability**

- We want to improve our ability to produce good results time after time with consistent repetition of behaviour.

## **8 What Else Can We Do?**

- How can we get our staff to never expose themselves to risks and always complete reliable work that will not break down or fail prematurely.....we ALL are ALWAYS listening!



# THE ENVIRONMENT WE WORK

SYMMETRICAL HAVE EXPERIENCE AND KNOWLEDGE OF THE VARIOUS LIMITATIONS AND CONTROLS THAT REQUIRE CONSIDERATION WHEN WORKING IN REMOTE AREAS

WE WILL CONSIDER THE FLORA AND FAUNA NATIVE TO THE ISLAND AND PROPOSE WORK ACCORDINGLY.

## Environmental Considerations:

- ☐ Cultural Heritage and Legacies
- ☐ Turtle nesting/hatching season
- ☐ Bird nesting/fledgling season
- ☐ Dust Emissions, Wind speed and direction
- ☐ Introduction of flora or fauna
- ☐ Contaminated soils
- ☐ Vibration and Noise effecting accommodation quarters
- ☐ Lease & Environmental Management Plan Conditions

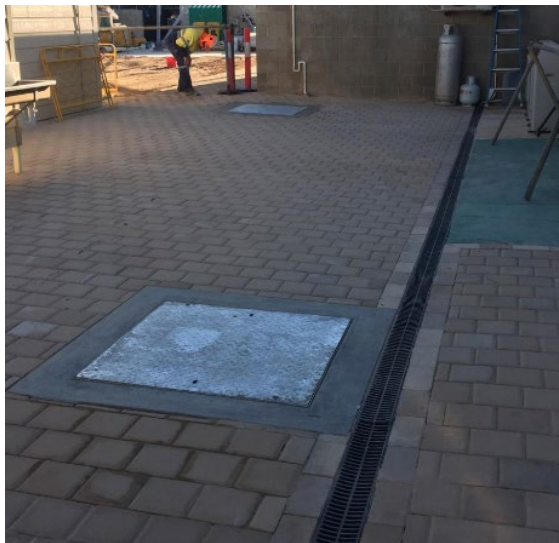
## Summary of Controls:

- ☐ Always ensure correct approvals are in place
- ☐ Control of light to beaches (during season)
- ☐ Control of vibrations/light to rookery (during season)
- ☐ Dust Mitigation/Suppression. Consider Wind & adjust
- ☐ Removal of contamination & Quarantine inspections
- ☐ Correctly report and relocate
- ☐ Keep camp management updated on activities
- ☐ Implement, comply with and audit our approved project spe environmental management plan.





# PHOTO'S





# PHOTO'S CONT...





# PHOTO'S CONT...





# PHOTO'S CONT...





# PHOTO'S CONT...





# PHOTO'S CONT...





# PHOTO'S CONT...

