



Symmetrical
group

Capability Statement

Presented by:
Luke Aldridge
Symmetrical Group





Symmetrical Group commenced operations in 2008 as a multi-disciplined construction and maintenance contractor based in the Pilbara.

Since then, we have established a reputation for delivering reliable, high-quality services across a diverse range of projects.

With a flexible, solution-driven approach, we are committed to going wherever required and doing whatever it takes to achieve the best outcomes for our clients.

RELEVANT EXPERIENCE – CIVIL

- Surveys and Setouts
- GPS and Control Point Derived Setouts
- Detailed Excavation
- Bulk Earthworks
- Condition and Compaction of Fill to meet compaction target
- Batching Engineered Concrete Mixtures
- Road Base Preparation and Resurfacing
- In-situ and Precast Concrete
- Earth Stake Installation
- Bulk Screening Operation
- Quarantine Cleaning to Varanus Island Requirements
- HDPE Bund Liners
- Remote Concrete Batching and Delivery

- Building Maintenance/Refurb and Temporary Arrangements
- Rock Anchor Installation
- Detailed Civil and Structural Design
- New Land Estate Sub Division Services
- Drainage Installation
- Service Trenching and Cable Installation
- Water bore drilling and Pump Installation (upto 40m deep)
- Commercial and Domestic Building Construction
- Dam Construction
- Town Centre Redevelopments (Tom Price)
- Underground service location & identification
- Vacuum Excavation

HOW DO WE MAKE YOUR SERVICE SAFER?

We believe the best way to improve safety is by learning from those around us. Through conversations with colleagues across mining, resources, contracting, EPCMs, and manufacturing, we've identified the most effective methods and systems being used to make safety and compliance easier. By adopting these proven approaches and aligning them with our clients' mandatory processes, we have developed a framework that consistently improves safety performance.

Focus areas and what we do

Onboarding → Careful candidate selection with extra focus on the first 3 months of employment (highest injury risk).

Mentoring → Providing ongoing guidance to keep staff focused on safety

Qualifications and training → Confirm and track qualifications; send refresher reminders; prevent expired/irrelevant tickets on site.

Safety awareness training → Deliver regular training to increase knowledge across a wide range of safety matters.

Online SYMSYS system → Ensure all staff have access to the latest policies and procedures anytime.

Employee assistance program → Support employee wellbeing, recognising staff as our greatest resource.

Reliability and predictability → Build consistent behaviours to deliver safe, repeatable, high-quality outcomes.

Continuous improvement → Always listening and seeking new ways to eliminate risks and strengthen safety

THE ENVIRONMENT WE WORK IN

Symmetrical has extensive experience and knowledge of the unique limitations and controls required when working in remote areas. We carefully assess local conditions, taking into account native flora and fauna, and plan our work to ensure it is carried out responsibly and sustainably.

Environmental Considerations

- Cultural heritage and legacies
- Turtle nesting/hatching season
- Bird nesting/fledgling season
- Dust emissions, wind speed & direction
- Introduction of flora or fauna
- Contaminated soils
- Vibration & noise affecting accommodation
- Lease & environmental management plan conditions

Summary of Controls

- Ensure correct approvals are in place
- Control lighting on beaches (seasonal)
- Manage vibrations/lighting near rookeries (seasonal)
- Dust suppression – monitor wind and adjust activities
- Remove contamination & conduct quarantine inspections
- Report and relocate flora/fauna correctly
- Keep camp management updated on activities
- Implement, comply with & audit project-specific EMP



GALLERY



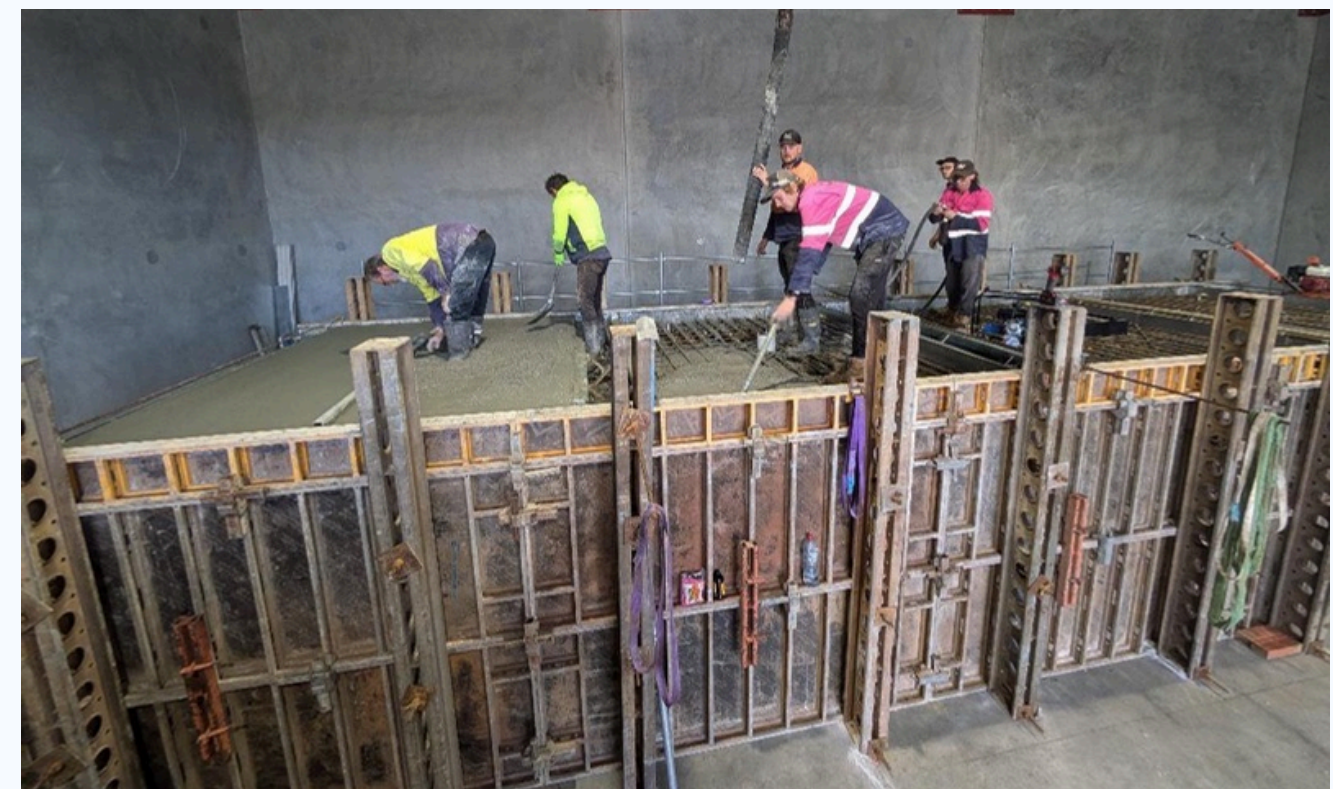
GALLERY



GALLERY



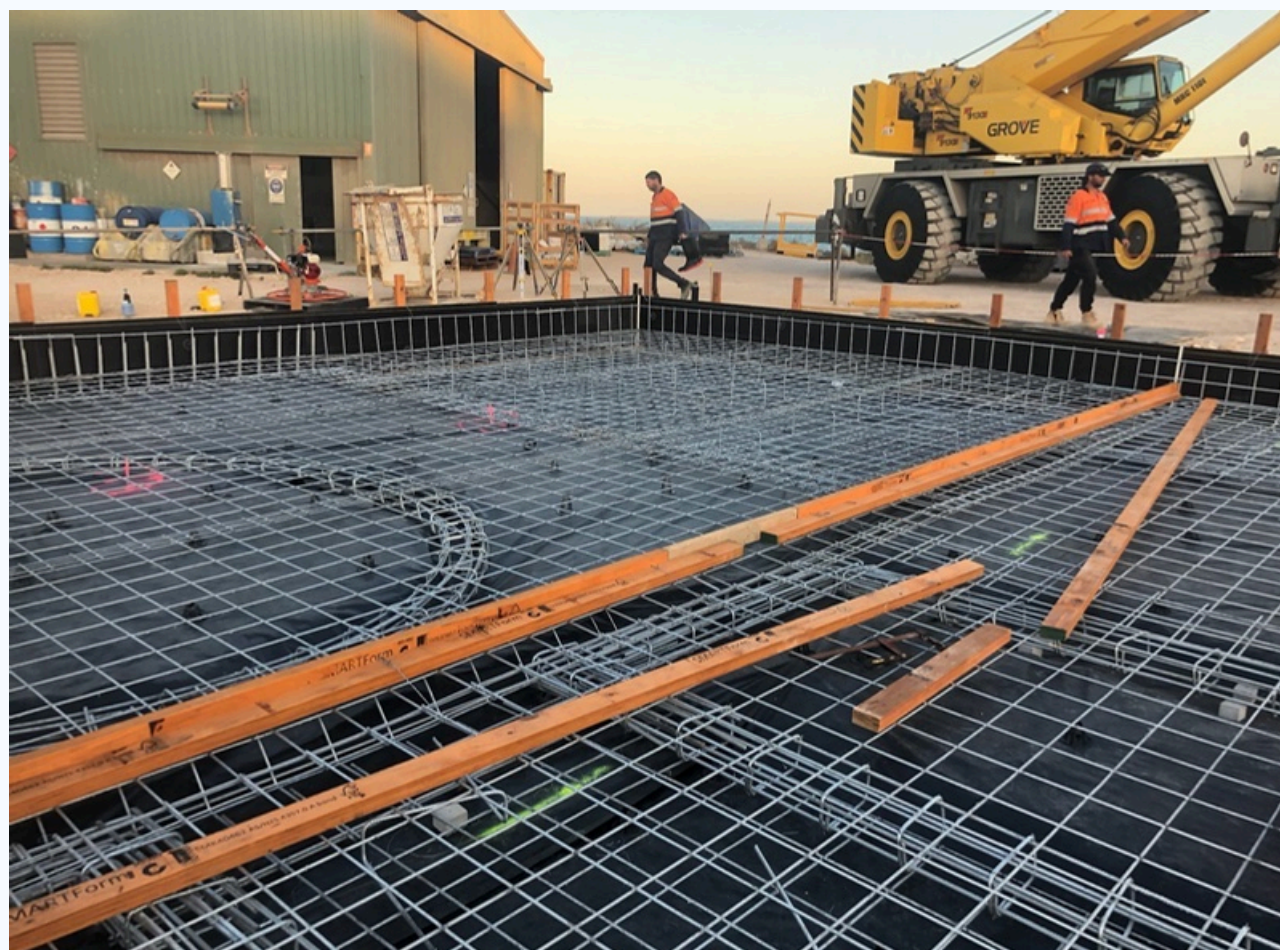
GALLERY



GALLERY



GALLERY



GALLERY



GALLERY





THANK YOU

